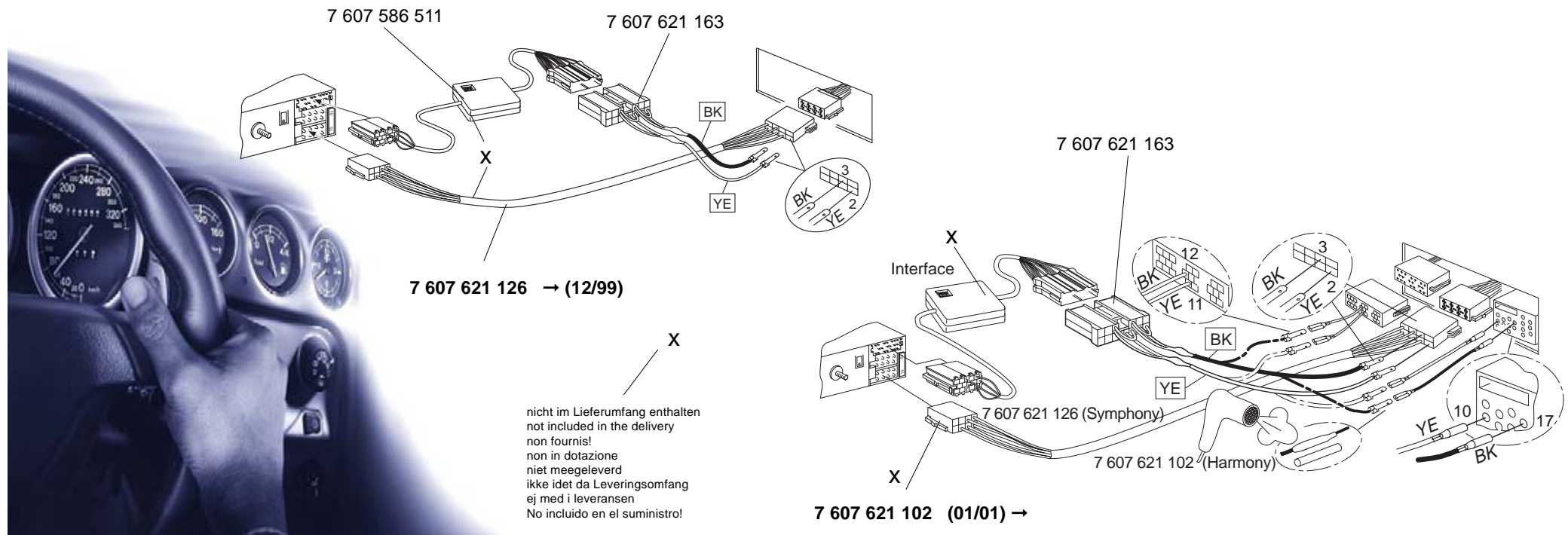


## Adapterkabel 7 607 621 163 (Für Interface 7 607 586 511)

- (D) Bedienungsanleitung für das Fahrzeugspezifische Adapterkabel 7 607 621 163 an die Rover 75-Lenkradfernbedienung.
- (GB) Operating instructions of the vehicle-specific adapter cable 7 607 621 163 to the Rover 75 steering wheel remote control.
- (F) Mode d'emploi pour le câble d'adaptation spécifique au véhicule 7 607 621 163 à la télécommande au volant Rover 75.
- (I) Istruzioni d'uso per il cavo di adattamento 7 607 621 163, con caratteristiche specifiche a seconda dell'autovettura, da allacciare al telecomando su volante.
- (NL) Gebruiksaanwijzing van de modelspecifieke adapterkabel 7 607 621 163 op de Rover 75-stuurwielafstandsbediening.
- (S) Bruksanvisning för den fordonsspecifika adapterkabeln 7 607 621 163 till rattfjärrstyrningen Rover 75.
- (E) Instrucciones de manejo del cable adapter 7 607 621 163 específico al vehículo al mando a distancia del volante.
- (P) Instrução de serviço para o cabo de adaptação específico para o tipo de automóvel 7 607 621 163 ao telecomando de volante da.



## Function List for Rover 75

	Radiotype:	1	2	3	4	5	Radiotype:	1	2	3	4	5	Radiotype:	1	2	3	4	5	Radiotype:	1	2	3	4	5	Radiotype:	3	
<b>RC-Button</b>	<b>Tuner</b>						<b>CC</b>						<b>CD</b>						<b>CDC</b>						<b>Phone</b>		
Mode	SRC	x	x	x	x	x	SRC	x	x	x	x		SRC	x	x		x	x	SRC		x	x	x	x			
Mode >2s	Mute	x	x		x	x	Mute	x	x		x		Mute	x	x		x	x	Mute		x		x	x			
Mode >2s	Phone			x			Phone			x									Phone			x			Phone	x	
VOL +	VOL +	x	x	x	x	x	VOL +	x	x	x	x		VOL +	x	x		x	x	VOL +		x	x	x	x	VOL +	x	
VOL -	VOL -	x	x	x	x	x	VOL -	x	x	x	x		VOL -	x	x		x	x	VOL -		x	x	x	x	VOL -	x	
▶	Preset +	x	x	x	x		FF	x	x		x		Track up				x		Track up		x	*	*				
▶	Manual Search down					x																					
▶>2s	Search up	x	x	x	x		CPS FF	x	x	x	x		Track up	x	x			x	CD up		x	*	*	x			
▶>2s	Band Selection					x													CD up				*				
◀	Band Selection	x	x	x	*		FR	x	x		x		Track down				x		Track down		x		*				
◀	Manual Search down					x																					
◀>2s	Search previous	x	x	x	x		CPS FF	x	x	x	x								CD down				*				
◀>2s	Preset +					x													Track start			x		x			



### Radiotype 1

Barcelona RCM 104 A, Hamburg RCM 104, Heidelberg RCM 126, Frankfurt RCM 104, Köln RCM 126, Las Vegas DJ, London RDM 104/RDM 126, Mailand DJ, Madison DJ, Madrid RCM 105, München RDM 126, Orlando DJ, Paris RCM 104, Stockholm RCM 104/RCM 126/RCM 128, San Francisco RDM 127, Sydney RCM 126/RCM 128, Toronto RDM 126/RDM 128, Washington RCM 127.

### Radiotype 2

Arizona RCM 127, Avignon RCM 127, Bergamo RCR 148, Cannes RCM 127, Casablanca RCM 127, Coburg RCM 127, Como RCM 148, Düsseldorf RCM 127, Hamburg RCM 148, Los Angeles DJ, Madrid RCM 148, Melbourne RCM 148, Miami DJ, Modena RD 148, Montana RCR 148, New Orleans DJ, Paris RCM 127, Texas RCM 148, Viking TMC 148, Wiesbaden RCR 148, Woodstock DJ.

### Radiotype 3

Amsterdam TCM 127  
Helsinki RTM 127  
Gemini GPS 148  
Monte Carlo TCM 169

### Radiotype 4

Generation Skyline  
Generation FunLine  
Generation T-Line

### Radiotype 5

TravelPilot RNS 149  
TravelPilot RNS 150

#### Hinweise:

\* (D) Funktion ist geräteabhängig; (GB) Function depends on system; (F) La fonction dépend de l'appareil; (I) La funzione dipende dal tipo di apparecchio; (NL) De werking is afhankelijk van het soortapparaat; (S) Funktionen beror av utrustningen; (P) A função depende do aparelho; (E) Función depende del sistema.